

2014 Herbaceous Ornamental Field Trial Results
Pamela J. Bennett, Extension Educator, Horticulture
Carolyn Allen, Program Assistant, Horticulture
Clark County

Introduction

Annual field trials have been conducted by Clark County Extension staff and Master Gardener volunteers (MGV) in Springfield, Ohio since 1995. MGV Wendy May was the 2014 project chair. The field trial plots are located in the Gateway Learning Gardens in Springfield, Ohio. Approximately 40 volunteers work on this project, starting plugs and seeds in the greenhouse, planting the trials, and weeding the plots.

The plots have soil that is typical of the west-central Ohio area, predominantly clay with a pH of 7.3. The current plots were established in the fall of 1996. The beds were tilled to a depth of 14" and 3" of compost added. Three inches of additional compost was added every 3 years with the last addition occurring in the fall of 2012. There is approximately 5000 square feet of bed space in full sun and approximately 1000 square feet in shade.

The selection of plants to be trialed in the garden varies from year to year. The selection is based on entries from seed companies, performance in prior years, on current trends, and on industry recommendations. The results of performance for the plants are based on the data collected at the plots. The data reflects the growing conditions of 2014. The purpose of the evaluation is to provide growers, landscapers, and homeowners a guide for plant selection for Ohio as well as to provide performance data to the breeders and seed companies.

Method

The plants were started from seeds or plugs, depending on the species, according to the recommended starting dates. They were planted in the plots on May 22, 2014. Rows were spaced 2' apart with 6 plants of each variety in a row; the plants in each row were spaced 1.5' apart. Trailing or vining plants were spaced 1.5' apart in the row with 4' between rows.

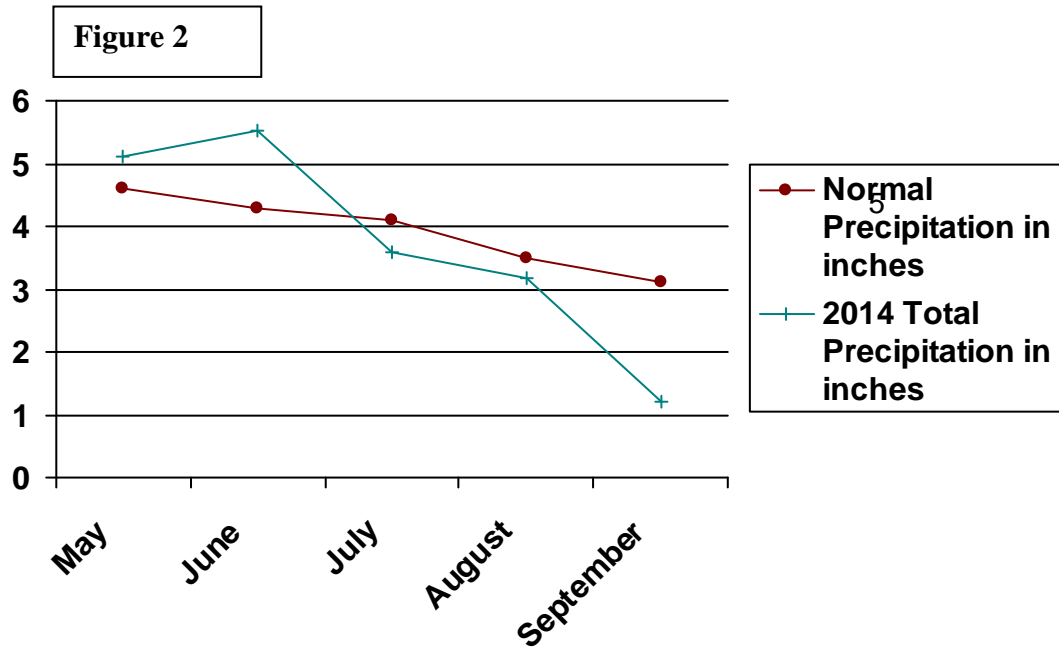
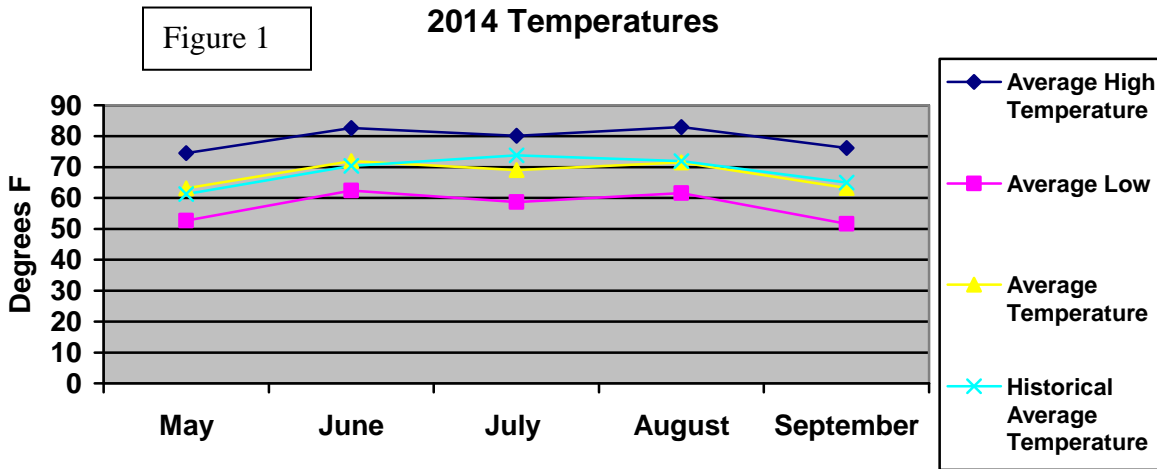
Osmocote™ (14-14-14) fertilizer was incorporated into the soil prior to planting at the labeled rate. No additional application of fertilizer was made. Irrigation was applied during dry periods in order to prevent wilt. See the weather information below for details. No mulch was used. Hand weeding was completed as needed. Treflan (e.g. trifluralin) was incorporated in between the rows 6 weeks after planting. Plants were grown in full sun, unless otherwise indicated. All *Calibrachoa* cultivars were planted in 18" diameter containers, six plants per pot. The material for the shade house provided a 70% shade. (Note: the plants in the shaded gray rows in the list below were those in the shade house). No insecticides or fungicides were applied. ***The plants were not deadheaded or pruned during the growing season with the exception of geraniums.***

Three people conducted visual evaluations in June, July, August, and September. The entire row was given a visual rating from 1 to 5. A rating of 5 was considered to be excellent and a rating of 1 was poor. The 3 individual evaluation ratings were averaged for the monthly rating figure. The monthly evaluations (June-September) were averaged for the final rating for each variety.

Weather Information

Precipitation at planting time in May was slightly above normal and average temperatures were around the historical average temperature (HAT) for this time period. The annuals were planted under good soil conditions; plants were irrigated in the first weeks in order to establish the root system. Additional irrigation was supplied in July and again in August because of low rainfall. Average temperatures in June were above HAT and rainfall was above normal. July, August, and September average temperatures were close to the HAT and rainfall was below normal. In 2014 there was 1 day that temperatures reached 90°F. This compares

to 7 days in 2013, 27 days in 2012, 31 days in 2011, and 21 days above 90°F in 2010. This growing season started out wet in May and June, a little below normal in July, dry in August and September in terms of soil moisture. *Figure 1* indicates temperature conditions and *Figure 2* indicates rainfall amounts for this growing season.



Results

Following (Table 1) are the varieties in the 2014 field trials and their monthly ratings and final rating. The plants listed that are shaded gray are those varieties that were grown under the shade house (70% shade cloth). The plants with an * after the Genus/Common Name were grown in containers, 6 plants per container.

The supplier for each variety is listed in the table; the supplier key is at the end. The plants are listed in order of Final Rating from highest to lowest. A rating of 5 is the highest; a rating of 1 is the lowest.

Table 1

Genus/Common Name	Series	Variety	Company	June	July	Aug	Sep	Final Rating
<i>Begonia</i>		Pegasus™	PW	5.00	5.00	5.00	5.00	5.00
<i>Lobularia/Alyssum</i>		Dark Knight™	PW	4.67	5.00	5.00	5.00	4.92
<i>Petunia</i>	Supertunia®	Black Cherry	PW	4.67	5.00	5.00	5.00	4.92
<i>Impatiens</i> hybrid	Big Bounce™	Lilac	S	4.67	5.00	5.00	5.00	4.92
<i>Euphorbia</i> hybrid		Diamond Delight™	PW	4.67	5.00	5.00	5.00	4.92
<i>Pennisetum setaceum</i>	Graceful Grasses®	Sky Rocket	PW	4.33	5.00	5.00	5.00	4.83
<i>Impatiens</i> hybrid	Bounce™	White	S	4.33	5.00	5.00	5.00	4.83
<i>Impatiens</i> hybrid	Big Bounce™	White	S	4.33	5.00	5.00	5.00	4.83
<i>Petunia</i>	Supertunia® Mini	Rose Veined Improved	PW	4.67	5.00	5.00	4.33	4.75
<i>Petunia</i>	Supertunia®	Morning Glory Charm	PW	4.33	5.00	5.00	4.67	4.75
<i>Solenostemon/ Coleus</i>		Coleosaurus	BFP	4.33	4.67	5.00	5.00	4.75
<i>Impatiens hawkerii</i>	Divine™	Hot Cha Cha	PAS	4.00	5.00	5.00	5.00	4.75
<i>Impatiens</i> hybrid	Big Bounce™	Violet	S	4.00	5.00	4.67	5.00	4.67
<i>Impatiens</i> hybrid	Bounce™	Cherry	S	3.67	4.67	5.00	5.00	4.58
<i>Impatiens</i> hybrid	Bounce™	Violet	S	4.00	4.67	5.00	4.67	4.58
<i>Impatiens</i> hybrid	Big Bounce™	Red	S	4.00	4.67	5.00	4.67	4.58
<i>Angelonia/Summer Snapdragon</i>	Archangel™	Dark Rose	BFP	4.00	4.67	5.00	4.67	4.58
<i>Petunia</i>	Supertunia®	Indigo Charm Improved	PW	4.33	5.00	5.00	4.00	4.58
<i>Caladium</i>	Artful®	Fire and Ice™	PW	3.67	4.33	5.00	5.00	4.50
<i>Impatiens</i> hybrid	Big Bounce™	Cherry	S	3.33	4.67	5.00	5.00	4.50
<i>Cleome/ Spider Plant</i>		Senorita Rosalita®	PW	2.67	5.00	5.00	5.00	4.42
<i>Impatiens</i> hybrid	Bounce™	Pink Flame	S	3.67	4.00	5.00	5.00	4.42
<i>Calibrachoa*</i>	Superbells®	Cherry Red Improved	PW	4.00	4.67	5.00	3.67	4.33
<i>Petunia</i>	Easy Wave™	Burgundy Velour	PAS	4.33	4.33	4.67	4.00	4.33
<i>Impatiens hawkerii</i>	Divine™	Fresh Mix	PAS	3.67	4.67	4.67	4.33	4.33
<i>Cleome/ Spider Plant</i>		Pequena Rosalita™	PW	2.33	4.67	5.00	5.00	4.25
<i>Caladium</i>	Artful®	Heartfire™	PW	3.33	4.33	4.67	4.67	4.25
<i>Lantana</i>	Lucky™	Lavender	BFP	3.00	4.33	4.67	5.00	4.25
<i>Canna</i>	Cannova	Rose	BI	3.00	4.67	4.33	4.67	4.17
<i>Petunia</i>	Easy Wave™	Berry Velour	PAS	4.00	4.00	4.67	4.00	4.17
<i>Verbena</i>	EnduraScape™	Blue	BFP	2.67	4.33	5.00	4.67	4.17
<i>Celosia plumosa</i>	Arrabona	Red	PAS	3.67	3.67	4.67	4.67	4.17
<i>Impatiens hawkerii</i>	Ruffles™	Peach	PW	3.00	3.67	5.00	5.00	4.17
<i>Canna</i>	Cannova	Red Shades	BI	3.00	4.00	4.67	4.67	4.08
<i>Viola</i>	Anytime™	Sunlight	PW	4.33	4.67	3.33	4.00	4.08
<i>Viola</i>	Anytime™	Dove	PW	4.67	4.33	3.33	4.00	4.08

Genus/Common Name	Series	Variety	Company	June	July	Aug	Sep	Final Rating
<i>Angelonia</i> /Summer Snapdragon	Archangel™	Dark Purple	BFP	4.00	4.33	4.67	3.33	4.08
<i>Salvia</i>	Ablazin™	Tobasco	PW	4.33	4.67	4.00	3.33	4.08
<i>Viola</i>	Anytime™	Quartz	PW	4.33	4.33	3.33	3.33	3.83
<i>Salvia</i>	Ablazin™	Purple	PW	3.33	4.33	4.00	3.67	3.83
<i>Verbena</i>	EnduraScape™	Hot Pink	BFP	3.67	4.00	4.33	3.00	3.75
<i>Coreopsis grandiflora</i>		Sun Up	K	3.67	4.67	3.67	3.00	3.75
<i>Canna</i>	Cannova	Yellow	BI	2.67	4.00	4.67	3.67	3.75
<i>Petunia</i>	Supertunia®	Limoncello	PW	3.67	3.33	4.33	3.33	3.67
<i>Scaevola</i>		Whirlwind® Blue	PW	3.33	4.67	4.00	2.33	3.58
<i>Verbena</i>	EnduraScape™	Red	BFP	3.67	3.67	4.33	2.33	3.50
<i>Petunia</i>	Easy Wave™	Red Velour	PAS	3.33	3.00	4.33	3.00	3.42
<i>Calibrachoa</i> *	Superbells®	Strawberry Punch	PW	4.00	4.00	3.33	2.00	3.33
<i>Calibrachoa</i> *	Conga™	Orange	BFP	4.00	4.00	2.33	3.00	3.33
<i>Impatiens hawkerii</i>	Ruffles™	Red	PW	2.00	2.67	5.00	3.67	3.33
<i>Zinnia</i>	Zahara™	Raspberry	PAS	2.67	4.00	3.67	3.00	3.33
<i>Pelargonium</i>	Timeless™	Fire	PW	2.33	3.33	2.67	4.67	3.25
<i>Verbena</i>	EnduraScape™	Lavender	BFP	2.67	4.00	4.67	1.67	3.25
<i>Calibrachoa</i>	Superbells®	Frostfire	PW	2.33	3.33	4.33	2.67	3.17
<i>Viola</i>	Anytime™	Sugarplum	PW	3.00	4.67	2.33	2.67	3.17
<i>Impatiens hawkerii</i>	Ruffles™	Lavender	PW	1.67	2.67	5.00	3.00	3.08
<i>Lantana</i>	Little Lucky™	Orange	BFP	2.00	3.33	2.00	4.33	2.92
<i>Sutera</i>	Snowstorm®	Blue Bubbles	PW	4.00	2.00	2.00	3.33	2.83
<i>Verbena</i>	Superbena® Royale	Red	PW	2.67	3.33	3.67	1.67	2.83
<i>Sutera</i>	Snowstorm®	Snow Globe™	PW	3.33	2.00	2.00	3.67	2.75
<i>Impatiens hawkerii</i>	Ruffles™	Fuschia Rose	PW	2.33	2.33	4.00	2.00	2.67
<i>Calibrachoa</i> *	Conga™	Blush	BFP	4.00	3.67	2.00	1.00	2.67
<i>Verbena</i>	Superbena® Royale	Cherryburst	PW	2.67	2.67	3.67	1.67	2.67
<i>Calibrachoa</i> *	Conga™	Strawberry Burst	BFP	3.33	3.00	2.00	1.67	2.50
<i>Calibrachoa</i> *	Conga™	Lemon	BFP	3.33	1.33	1.67	1.00	1.83
<i>Verbena</i>	EnduraScape™	Dark Purple	BFP	0.00	0.00	0.00	0.00	0.00
<i>Scaevola aemula</i>		Pink Wonder™	PW	2.67	Dead	Dead	Dead	Dead

Seed Companies

Ball Flora Plant = BFP Ball Ingenuity = BI Kieft = K PanAmerican Seed Company = PAS
 Proven Winners = PW Selecta = S



THE OHIO STATE UNIVERSITY

COLLEGE OF FOOD, AGRICULTURAL,
AND ENVIRONMENTAL SCIENCES

CFAES provides research and related educational programs to clientele on a nondiscriminatory basis. For more information: <http://go.osu.edu/cfaesdiversity>